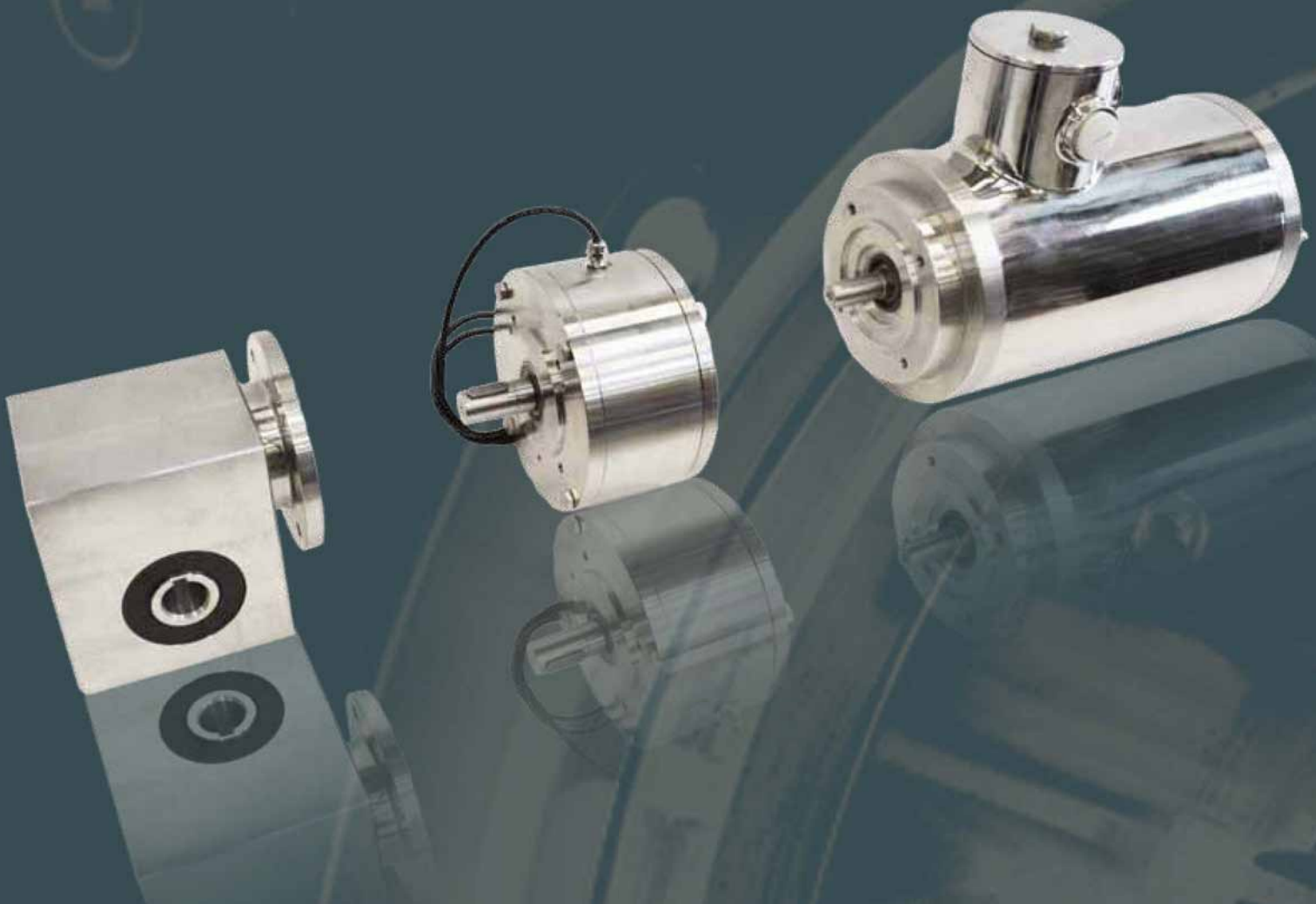


Stainless Steel Brake

Module System



- /// Stainless steel housing
- /// Hygienic design
- /// Smooth surface
- /// IP68/69 (when mounted between gear and motor)

/// Technical specifications

Features:

- /// Easy and simple to incorporate
- /// Standard IEC sizes
- /// Hygienic design
- /// Housing made of stainless steel 304
- /// IP68/69 when mounted between gear and motor
- /// The brake conforms to UL/CSA standards

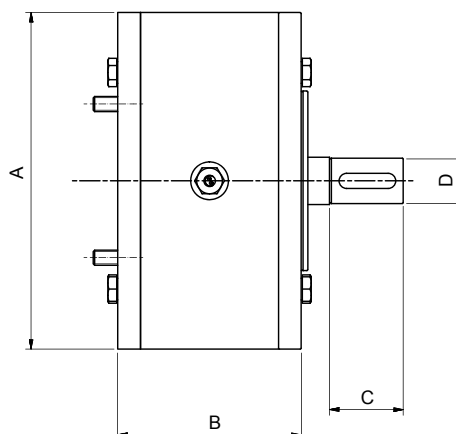
Like all stainless steel products from BJ-Gear A/S the brake meets the high demands and standards that for example the food industry requires from products that is to be used directly in a process line.

The brake is characterized by a machined smooth surface that makes cleaning easy and thereby significantly reduces the risk for bacterial growth.

The brake is available in three sizes with a torque from 5-20 Nm. The brake fit together with the following IEC motor sizes 63, 71, 80 and 90 (B14), others sizes can be made on request.

The brake is designed to be mounted between a flanged motor and a gearbox, hence the output shaft cannot be subjected to additional axial or radial loads.

The standard voltage is 24 VDC and 205 VDC. Other voltages on request.



Item No.	Motor frame size [IEC]	MbN ** [Nm]	Standard voltages [VDC]*	P 20° C [W]	Brake size	A [mm]	B [mm]	C [mm]	D [mm]	Cable length standard [m]
DV1001	63	5	24 / 205	22	08	Ø120	67	20.5	Ø11 k6	1
DV1002	71	5	24 / 205	22	08	Ø120	68	27	Ø14 k6	1
DV1003	80	10	24 / 205	28	10	Ø178	97	39	Ø19 k6	1
DV1004	90	20	24 / 205	34	13	Ø178	97	39	Ø24 k6	1

* Other voltages on request ** Braking torque after completion of running-in

Copyright © 2015 BJ-Gear A/S.

All product rights reserved. All data, illustrations, photographs, drawings and statements are for general information only and subject to change without notice. They should not be considered as a warranty or legal obligation of any kind.